

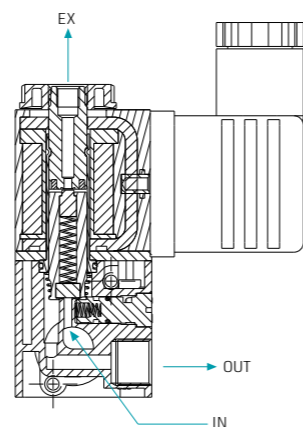
SOLENOID VALVES | General Purpose

Direct Operated | Manifolds

G80-C | Added-on Manifold



4 Station Manifold | plastic manual override



Technical Data

Function	2 Way, 3 Way NC
Orifice size	See table
Ports size	1/8" BSP & NPT
Pressure range	<ul style="list-style-type: none"> See table Valves for pressure higher than 12 bar cannot be supplied with manual override.
Kv (l/min)	See table
Temperature range	Fluid : -10°C to 80°C (no freezing) Ambient : -10°C to 50°C
Assembly	You can assemble your own manifold by adding segments. A set of two units can be connected by using two designated screws. For the first "stand" a different kit of screws is used.
Materials in contact with media	Manual override: Plastic Main Valve: Mazak Solenoid Operator: Brass, Stainless Steel AISI 300 & 400 series Seals: NBR, FKM, EPDM
Media	Air, water, oil
Coil voltage	<ul style="list-style-type: none"> Voltage and power consumption - see table All Baccara coil voltages are ± 10% of nominal
Standard protection class	IP65 with connector

Max. Pressure (bar) 2W, 3W NC table

Coil Current/Power	Orifice (mm)		
	1.0	1.2	1.6
AC - 75W	15	12	10.5
AC - 4W	12	10	7
DC - 6.5W ⁽²⁾	15	12	10.5
DC - 3W	12	10	7
Flow factor Kv(l/min)	0.5	0.65	1

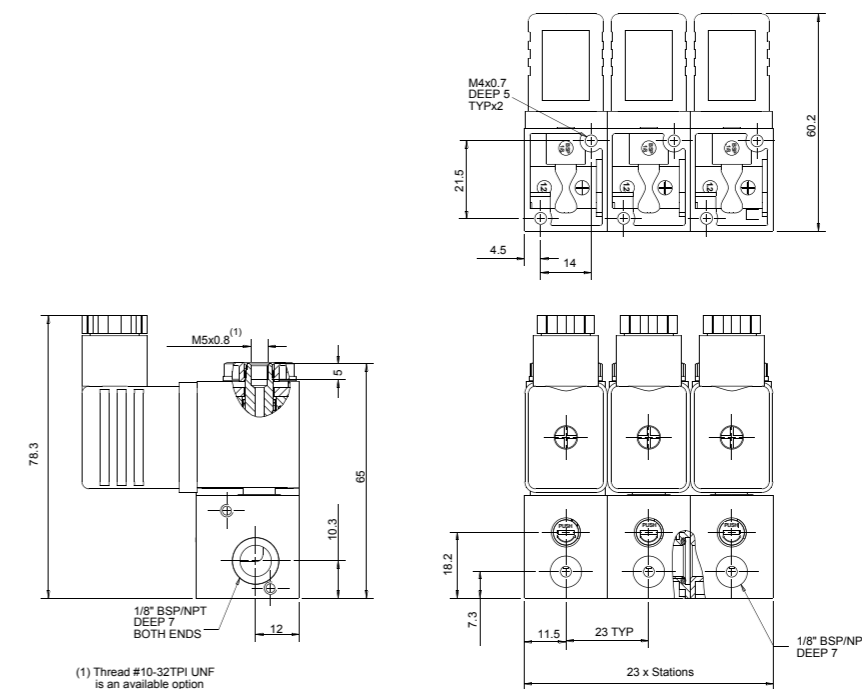
Voltage & Power Consumption

V	AC (W)				DC (W)	
	75	4	6	3	6.5	3
6	•	•	•	•	•	•
12	•	•	•	•	•	•
24	•	•	•	•	• ⁽²⁾	•
110	•	•	•	•		
230	•	•	•	•		

• Available options

Direct Operated | Manifolds | G80

Dimensions



How to Order

G80-C	# STATIONS	BODY ⁽¹⁾	PORT	FUNCTION	ORIFICE	SEALS	MANUAL OVERRIDE	VOLTAGE	POWER	CONNECTOR
	Specify number 00-nn	Mazak 1	1/8" BSP 10	2W NC 1	1.0 1	NBR N	Plastic 1	W/out coil 0	No coil 0	without 0
			1/8" NPT 11	2W NO 2	1.2 2	FKM V		6 1	AC75W 50Hz 1	with 1
				3W NC 3	1.6 3	EPDM E		12 2	AC6W 60Hz 2	with bi-color LED 2
				3W NO 4				24 3	DC6.5W ⁽²⁾ 3	surge protection with LED 3
								110 5	AC4W 50Hz 4	flying leads coil 4
								230 7	AC3W 60Hz 5	other 9
								other 9	DC3W 7	

* When ordering without coil, please define what current and pressure rating is needed (DC, AC)

Example : G80-C-0611032N1-311

G80, 6 stations added-on manifold, Mazak, 1/8" BSP, 3W NC, 1.2mm orifice, NBR, with plastic manual override, 24V AC 75W with connector.

G80-C - 06 1 10 3 2 N 1 - 3 1 1

(1) For Stainless Steel tube add "s" : e.g G80-C - X Xs X X X X X X X X X

(2) 24VDC is 6Watt, 12VDC is 6.5Watt

* To order manifolds manufactured according to your specific requirements, please contact our technical sales department.