

G75-PR | Pressure reducing 3/4" - 2" 2 Way NC

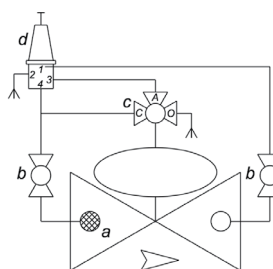


2" | Electric pressure reducing | 0,5-5 bar

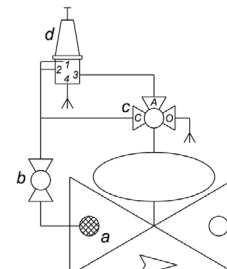
Main Components

| | DESCRIPTION |
|---|---------------------------------|
| a | Self flushing filter |
| b | Isolation ball valve (optional) |
| c | 3W Manual selector valve |
| d | Multi-functional pilot valve |

Pressure Reducing | PR



Pressure Sustaining | PS Quick Pressure Relief | QR



Technical Data

| | |
|-----------------|---|
| Solenoid | Supplied with 3W NO 1.2mm G75 operator |
| Assembly | Supplied with finger filter |
| Manual override | The XR100 has a manual override with 3 positions : <ul style="list-style-type: none"> • AUTO - for automatic operation (valve is open when solenoid is energized) • MANUAL - valve is kept open • CLOSE - valve is kept closed |
| Pressure | <ul style="list-style-type: none"> • Pilot pressure must be equal to, or higher than line pressure • A minimum pressure differential of 1 bar is required |

• For technical information, refer to G75-S | Electric 3/4" - 2" 2 Way NC

Voltage & Power Consumption

| | AC (W) 50 Hz | DC (W) |
|----|-----------------|--------|
| V | 2 | 4.5 |
| 12 | • | • |
| 24 | • | • |

• Available options

Coil resistance vs input voltage range

| Resistance [Ω] | Suitable input voltage range [V] |
|-------------------------|----------------------------------|
| 4 | 6 - 9 |
| 9 | 12 - 14 |
| 12 | 14 - 16 |
| 23 | 18 - 21 |

How to Order

| G75-PR | PORT | FUNCTION | FLOW CONTROL | VOLTAGE ⁽³⁾ | WIRES | PRESSURE RANGE |
|--------|----------------|----------|--------------------------|-------------------------|-------|----------------|
| | 3/4" BSPT 50 | 2W NC 1 | with 5 | No solenoid (hydraulic) | 0 | 0,5-5 bar Y |
| | 3/4" NPT 51 | | without ⁽¹⁾ 6 | 24V AC | 1 | 1-10 bar G |
| | 1" BSPT 60 | | | 24V AC w/out Diode | 1R | |
| | 1" NPT 61 | | | 12V AC | 3 | |
| | 1-1/2" BSPT 70 | | | 12V DC | 4 | |
| | 1-1/2" NPT 71 | | | 24V DC | 5 | |
| | 2" BSPT 80 | | | 23 Ω | 6 | |
| | 2" NPT 81 | | | 4 Ω | B | |
| | | | | 9 Ω | C | |
| | | | | 12 Ω | D | |

Example : G75-PR-70151Y

G75 pressure reducing valve, 1-1/2" BSPT, 2W NC with flow control, 24V AC, two wires, 0,5-5 bar

G75-PR - 70 1 5 1 Y

(1) For 3/4", 1" valves only

(2) For Latch only

(3) For Latch : Refer to coil resistance vs input voltage table

* To order valves manufactured according to your specific requirements, please contact our technical sales department